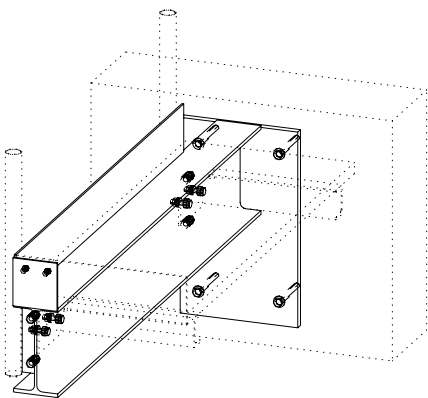
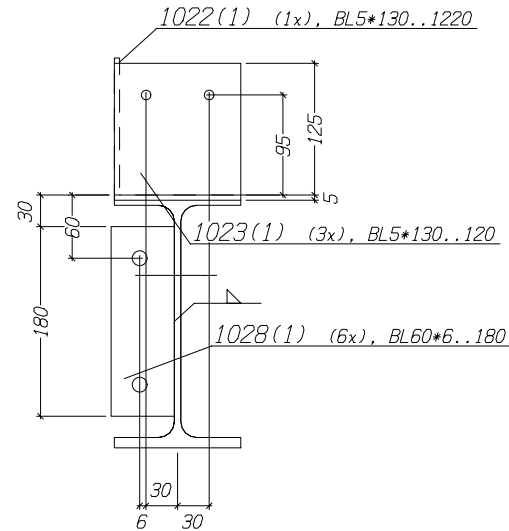


Vorderansicht

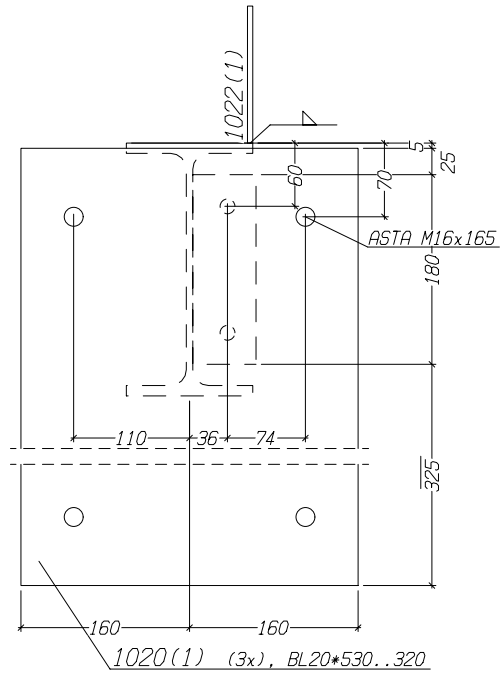


**** Stückliste für eine Liefer-Pos. 1 TOTAL 1/1 x Ausführen ****

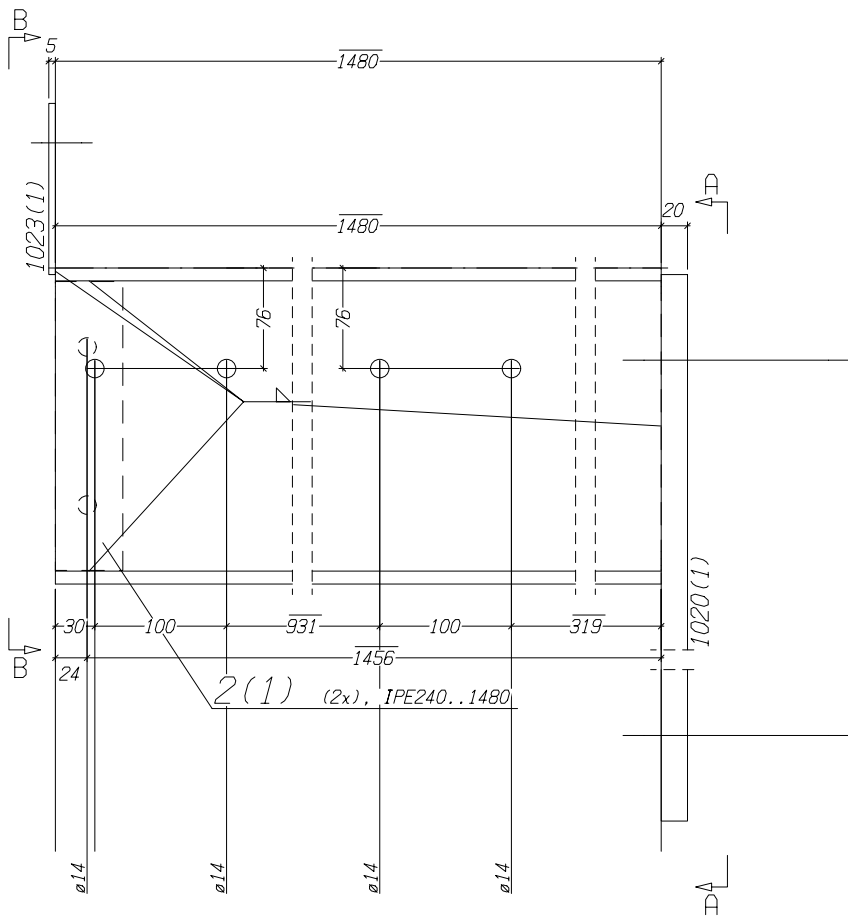
Nr.	Tnr	Pos.	Benennung	Stk.	Profil	Material	Länge	Gewicht	Bem.
1	1	1	Träger	1	IPE240	S235JR	1480	45.44	
2	1	1020	Blech	1	BL20*530	S235JR	320	26.63	
3	1	1022	Einfassung	1	BL5*130	S235JR	1220	6.23	
4	1	1023	Blech	1	BL5*130	S235JR	120	0.61	
5	1	1028	Blech	2	BL60*6	S235JR	180	1.02	
Gesamtgewicht (kg)								79.92	
Versandabmessungen (H x B x L): 665 x 320 x 1505									



Ansicht 1 , B-B



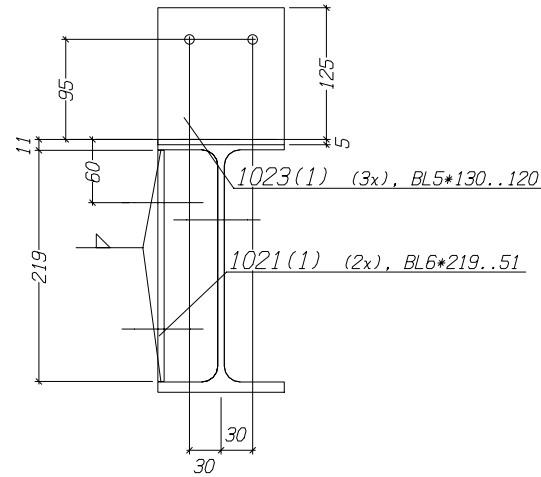
Ansicht 1 , A-A



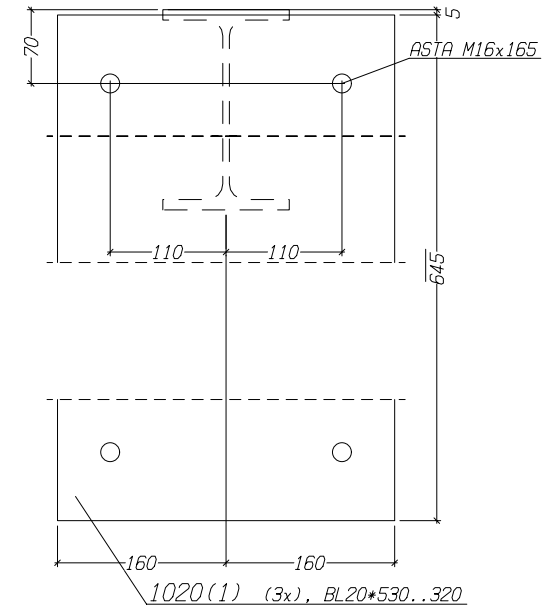
Vorderansicht

**** Stückliste für eine Liefer-Pos. 2 TOTAL 2/2 x Ausführen ****

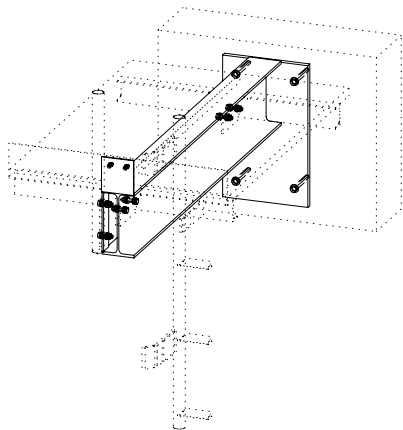
Nr.	Tnr	Pos.	Benennung	Stk.	Profil	Material	Länge	Gewicht	Bem.
1	1	2	Träger	1	IPE240	S235JR	1480	45.44	
2	1	1020	Blech	1	BL20*530	S235JR	320	26.63	
3	1	1021	Blech	1	BL6*219	S235JR	51	0.53	
4	1	1023	Blech	1	BL5*130	S235JR	120	0.61	
Gesamtgewicht (kg)								73.20	
Versandabmessungen (H x B x L): 660 x 320 x 1505									

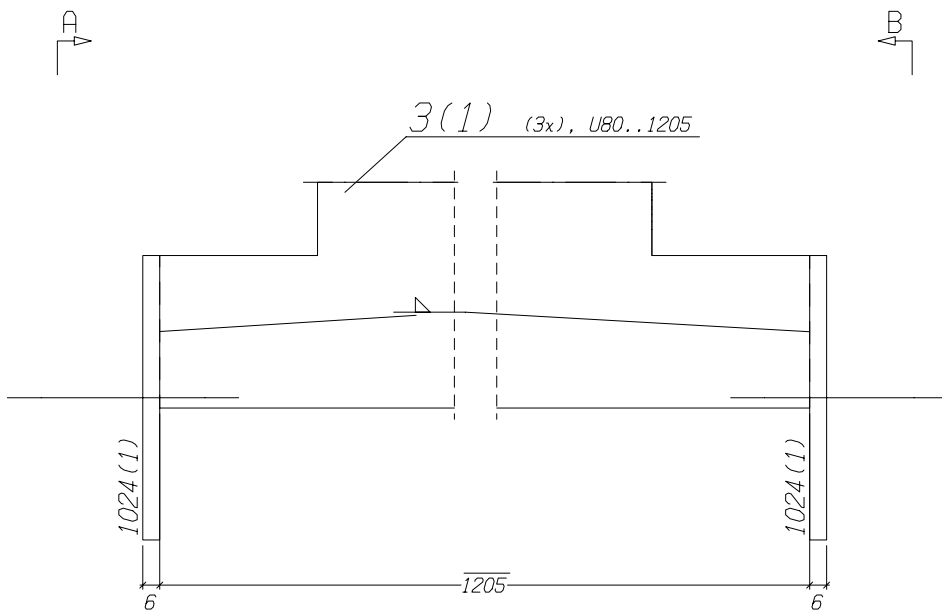


Ansicht 2 , B-B

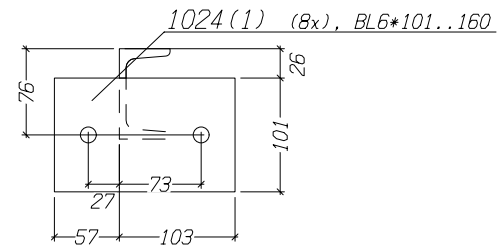


Ansicht 2 , A-A

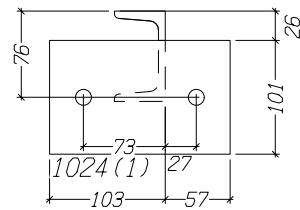




Hintersicht



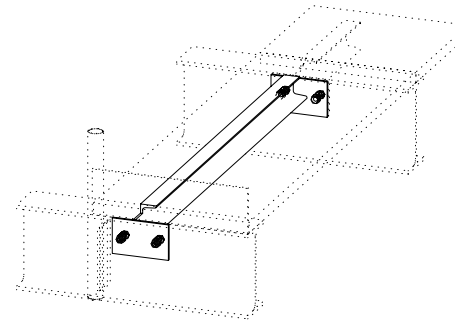
Ansicht 3 , B-B

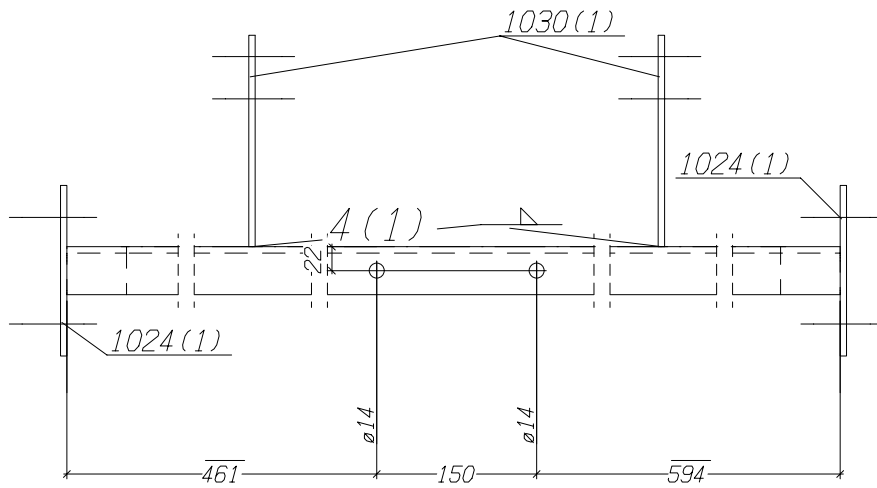


Ansicht 3 , A-A

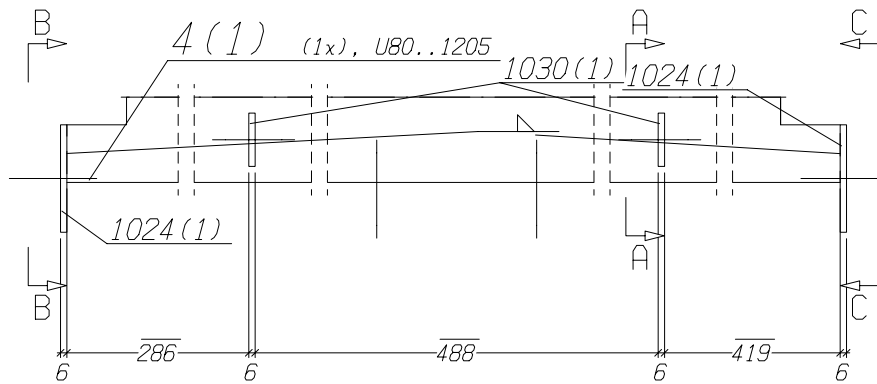
**** Stückliste für eine Liefer-Pos. 3 TOTAL 3/3 x Ausführen ****

Nr.	Tnr	Pos.	Benennung	Stk.	Profil	Material	Länge	Gewicht	Bem.
1	1	3	Querträger	1	U80	S235JR	1205	10.41	
2	1	1024	Blech	2	BL6*101	S235JR	160	1.52	
Gesamtgewicht (kg)								11.93	
Versandabmessungen (H x B x L): 127 x 160 x 1217									

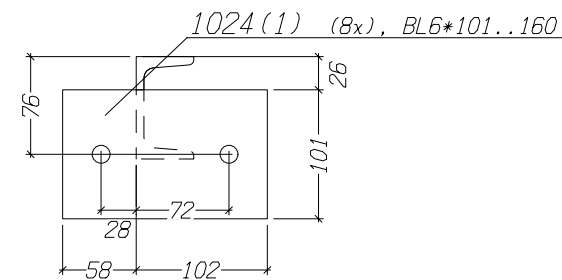




Unteransicht



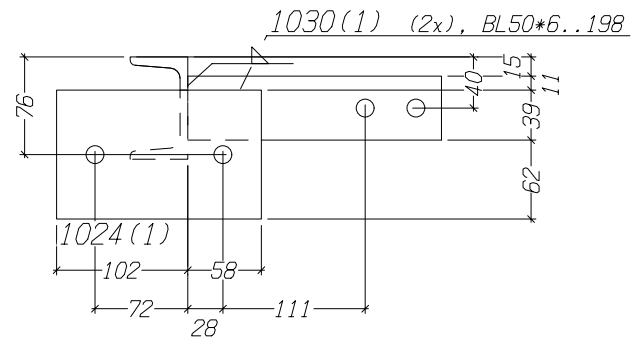
Hinteransicht



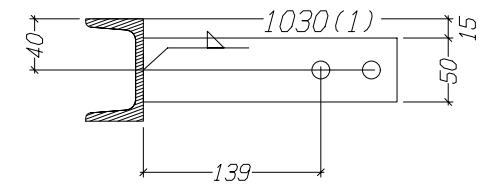
Ansicht 4, C-C

**** Stückliste für eine Liefer-Pos. 4 TOTAL 1/1 x Ausführen ****

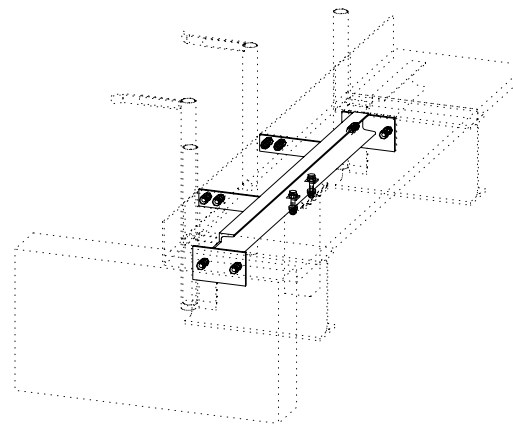
Nr.	Tnr	Pos.	Benennung	Stk.	Profil	Material	Länge	Gewicht	Bem.
1	1	4	Querträger	1	U80	S235JR	1205	10.41	
2	1	1024	Blech	2	BL6*101	S235JR	160	1.52	
3	1	1030	Blech	2	BL50*6	S235JR	198	0.93	
Gesamtgewicht (kg)								12.87	
Versandabmessungen (H x B x L): 127 x 301 x 1217									

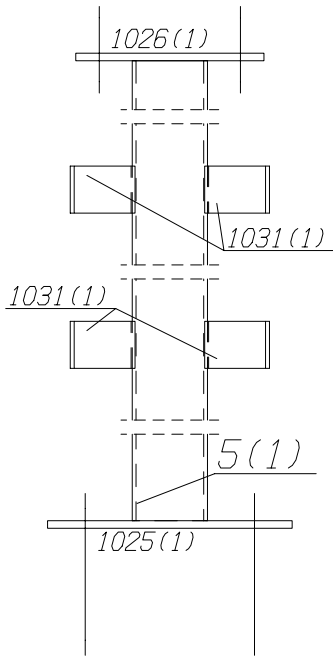


Ansicht 4, B-B

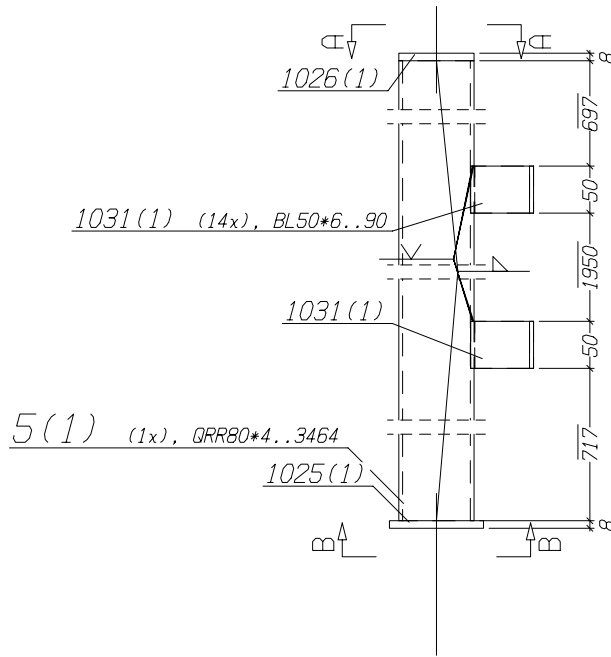


Schnitt 4, A-A

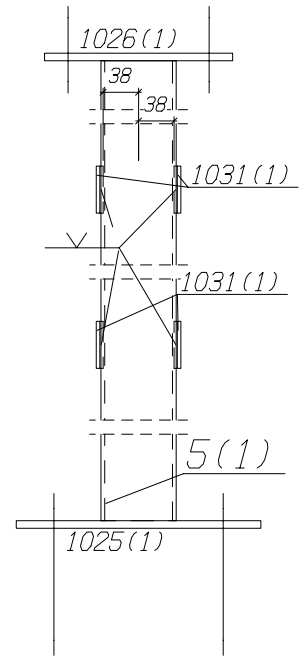




Unteransicht



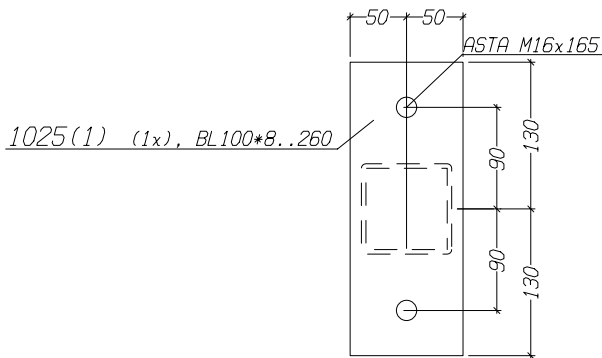
Vorderansicht



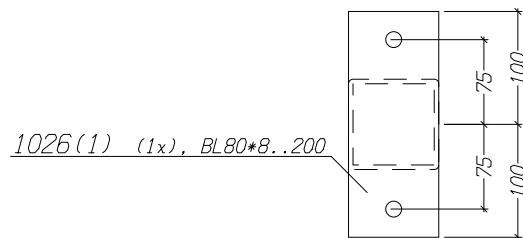
Oberansicht

**** Stückliste für eine Liefer-Pos. 5 TOTAL 1/1 x Ausführen ****

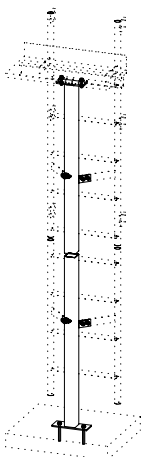
Nr.	Tnr	Pos.	Benennung	Stk.	Profil	Material	Länge	Gewicht	Bem.
1	1	5	Stütze	1	QRR80*4	S235JR	3464	31.94	
2	1	1025	Blech	1	BL100*8	S235JR	260	1.63	
3	1	1026	Blech	1	BL80*8	S235JR	200	1.00	
4	1	1031	Blech	4	BL50*6	S235JR	90	0.85	
Gesamtgewicht (kg)								35.42	
Versandabmessungen (H x B x L): 153 x 260 x 3480									

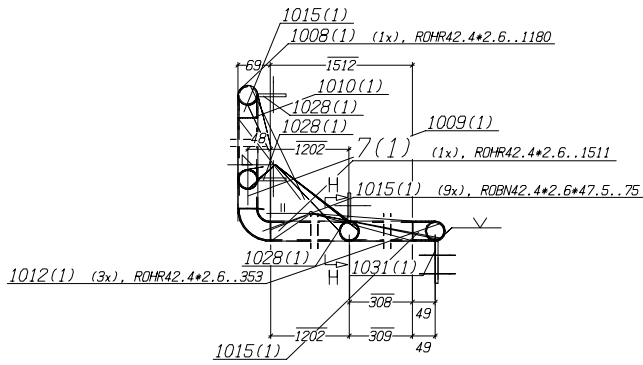


Ansicht 5 , B-B

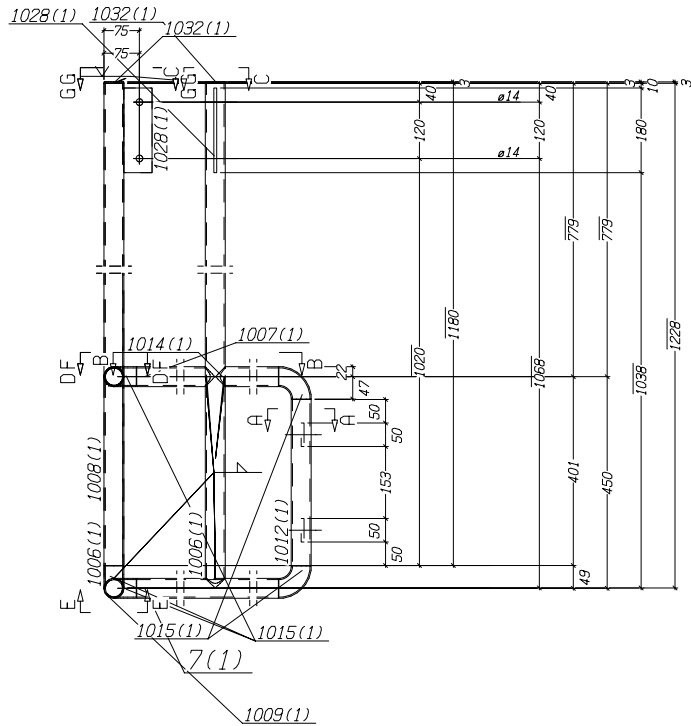


Ansicht 5 , A-A

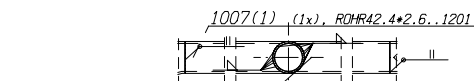




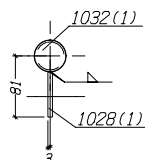
Vorderansicht



Oberansicht



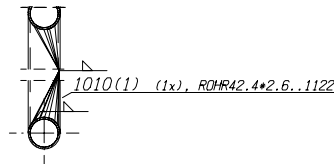
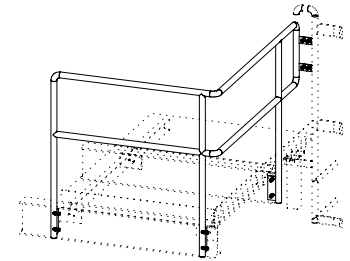
Schnitt 7, B-B



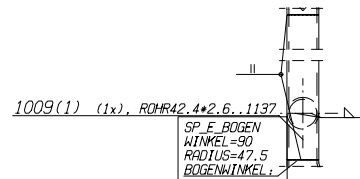
Ansicht 7, C-C

** Stückliste für eine Liefer-Pos. 7 TOTAL 1/1 x Ausführen **

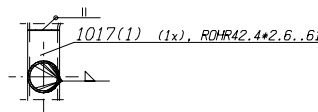
Nr.	Tnr	Pos.	Benennung	Stk.	Profil	Material	Länge	Gewicht	Bem.
1	1	7	Geländer	1	ROHR42.4*2.6	S235JR	1511	3.86	
2	1	1006	Geländer	2	ROHR42.4*2.6	S235JR	1228	6.27	
3	1	1007	Geländer	1	ROHR42.4*2.6	S235JR	1201	3.07	
4	1	1008	Geländer	1	ROHR42.4*2.6	S235JR	1180	3.01	
5	1	1009	Geländer	1	ROHR42.4*2.6	S235JR	1137	2.90	
6	1	1010	Geländer	1	ROHR42.4*2.6	S235JR	1122	2.86	
7	1	1012	Geländer	1	ROHR42.4*2.6	S235JR	353	0.90	
8	1	1014	Geländer	1	ROHR42.4*2.6	S235JR	308	0.79	
9	1	1015	Geländer	5	ROBN42.4*2.6*47.5	S235JR	75	0.95	
10	1	1017	Geländer	1	ROHR42.4*2.6	S235JR	61	0.15	
11	1	1028	Blech	3	BL60*6	S235JR	180	1.53	
12	1	1031	Blech	2	BL50*6	S235JR	90	0.42	
13	1	1032	Blech	3	BL3	S235JR	42	0.12	
Gesamtgewicht (kg)								26.83	
Versandabmessungen (H x B x L):								1366 x 1253 x 1651	



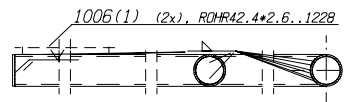
Schnitt 7, F-F



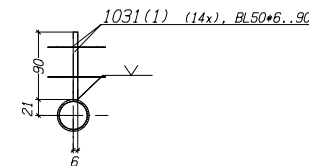
Ansicht 7, E-E



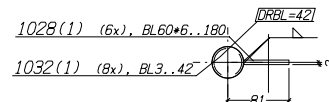
Schnitt 7, D-D



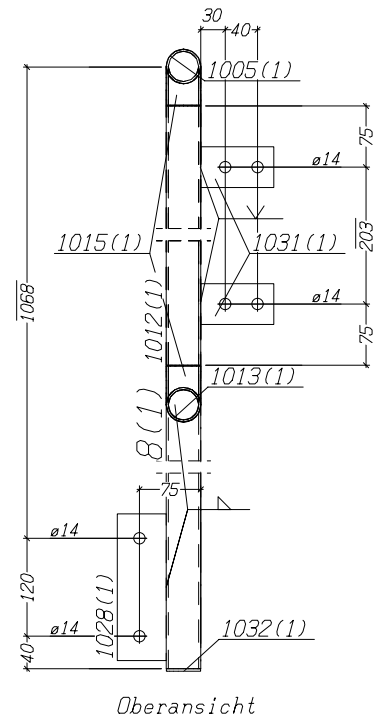
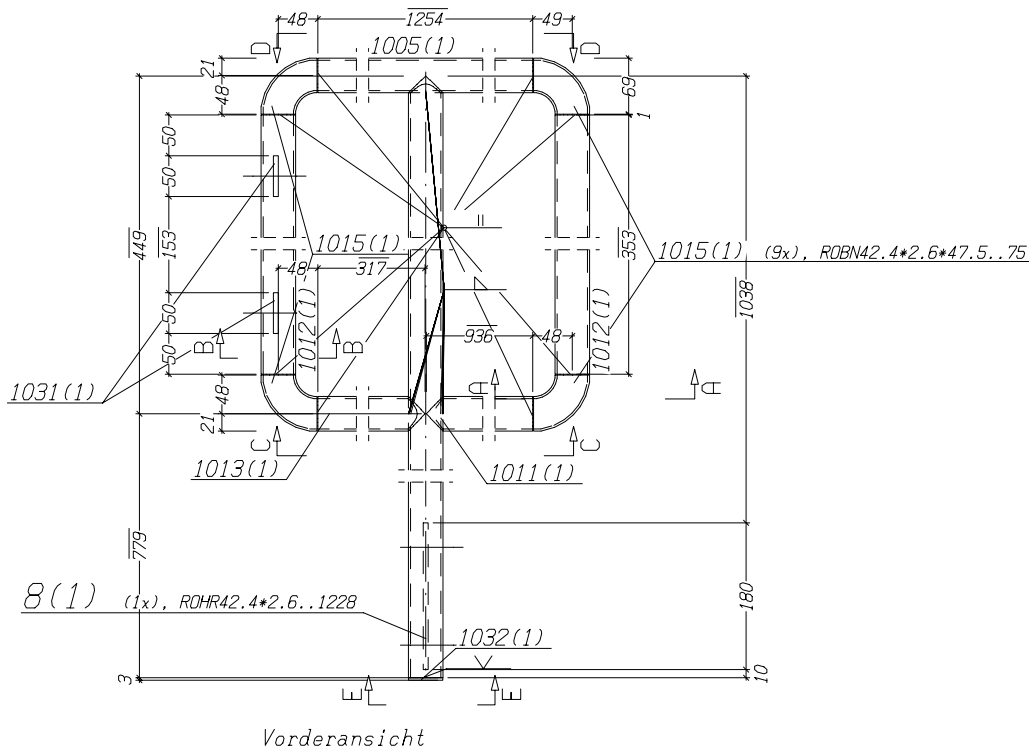
Schnitt 7, H-H



Ansicht 7, A-A

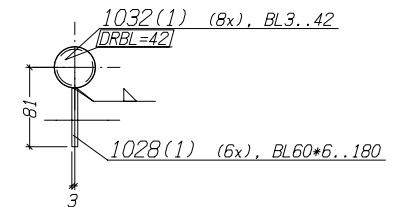


Ansicht 7, G-G

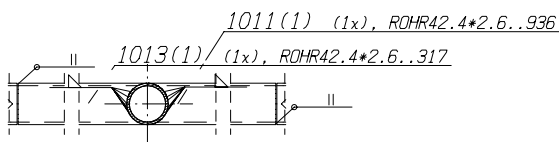


**** Stückliste für eine Liefer-Pos. 8 TOTAL 1/1 x Ausführen ****

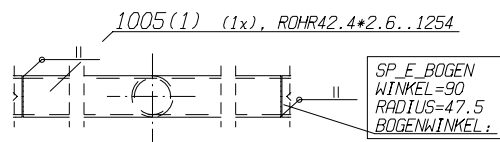
Nr.	Tnr	Pos.	Benennung	Stk.	Profil	Material	Länge	Gewicht	Bem.
1	1	8	Geländer	1	ROHR42.4*2.6	S235JR	1228	3.13	
2	1	1005	Geländer	1	ROHR42.4*2.6	S235JR	1254	3.20	
3	1	1011	Geländer	1	ROHR42.4*2.6	S235JR	936	2.39	
4	1	1012	Geländer	2	ROHR42.4*2.6	S235JR	353	1.80	
5	1	1013	Geländer	1	ROHR42.4*2.6	S235JR	317	0.81	
6	1	1015	Geländer	4	ROBN42.4*2.6*47.5	S235JR	75	0.76	
7	1	1028	Blech	1	BL60*6	S235JR	180	0.51	
8	1	1031	Blech	2	BL50*6	S235JR	90	0.42	
9	1	1032	Blech	1	BL3	S235JR	42		
Gesamtgewicht (kg)								13.06	
Versandabmessungen (H x B x L): 192 x 1393 x 1253									



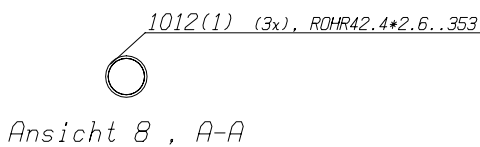
Ansicht 8, E-E



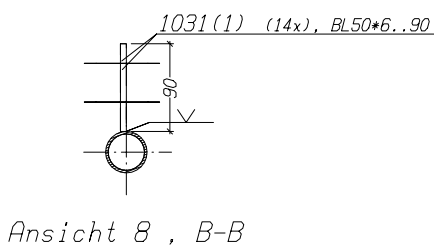
Schnitt 8, C-C



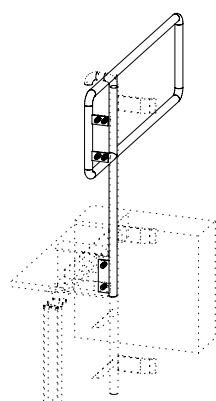
Ansicht 8, D-D

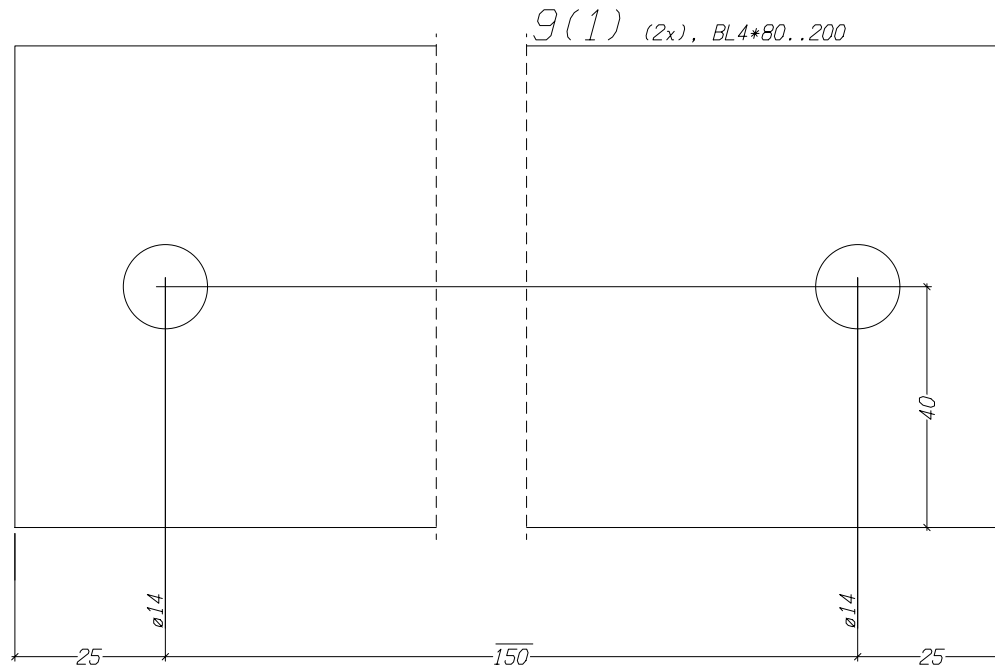


Ansicht 8, A-A

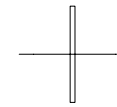
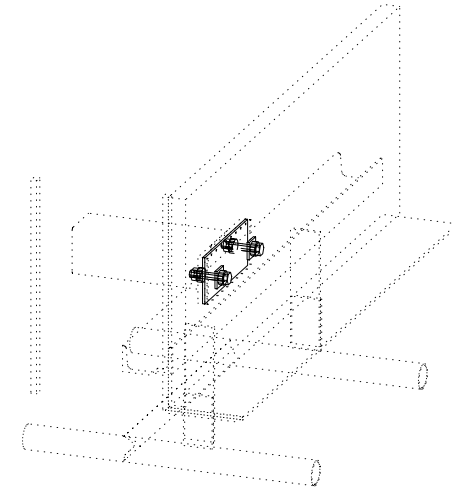


Ansicht 8, B-B





9(1) (2x), BL4*80..200



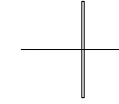
Ansicht von links, A-A



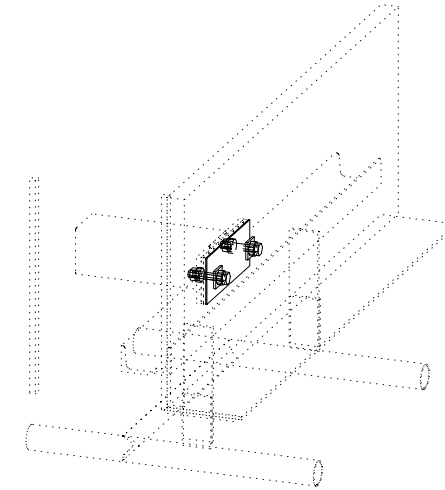
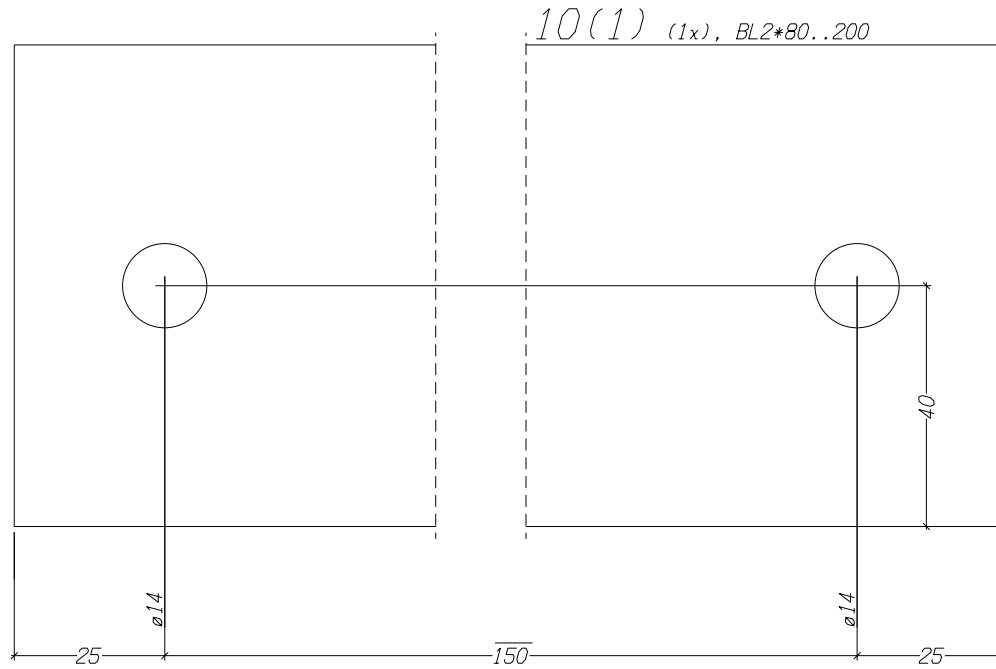
Vorderansicht

** Stückliste für eine Liefer-Pos. 9 TOTAL 2/2 x Ausführen **

Nr.	Tnr	Pos.	Benennung	Stk.	Profil	Material	Länge	Gewicht	Bem.
1	1	9	Blech	1	BL4*80	S235JR	200	0.50	



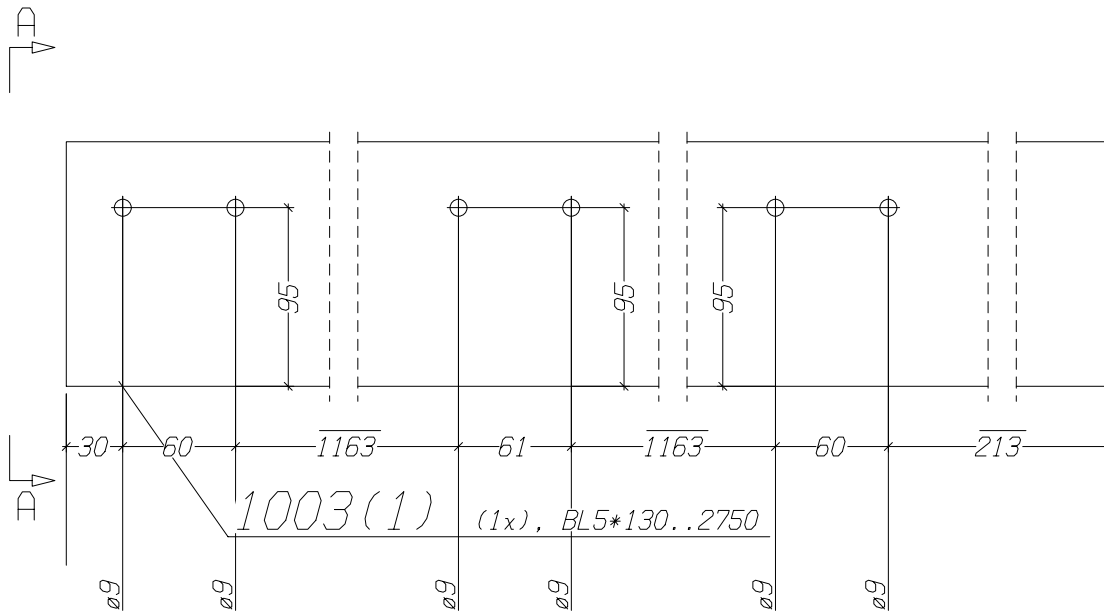
Ansicht von links, A-A



Vorderansicht

** Stückliste für eine Liefer-Pos. 10 TOTAL 1/1 x Ausführen **

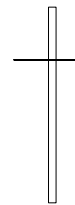
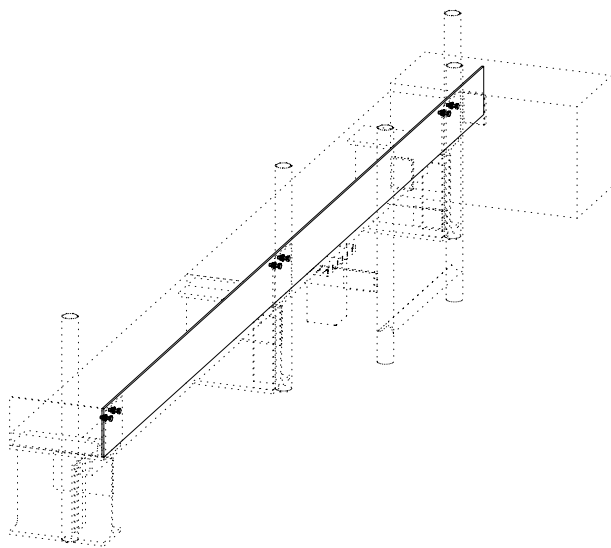
Nr.	Tnr	Pos.	Benennung	Stk.	Profil	Material	Länge	Gewicht	Bem.
1	1	10	Blech	1	BL2*80	S235JR	200	0.25	



Vorderansicht

** Stückliste für eine Liefer-Pos. 1003 TOTAL 1/1 x Ausführen **

Nr.	Tnr	Pos.	Benennung	Stk.	Profil	Material	Länge	Gewicht	Bem.
1	1	1003	Einfassung	1	BL5*130	S235JR	2750	14.03	



Ansicht von links, A-A